

MALDIVES LAND AND SURVEY AUTHORITY

MINISTRY OF HOUSING AND INFRASTRUCTURE

Office (PABX): +(960) 3004300, Fax: +(960) 3004254

Ameenee Magu, Maafannu, Male', 20392, Maldives.

Email: survey@housing.gov.mv

Web: www. surveyofmaldives.gov.mv



CONTROL POINT DETAILS	Station Number PSM0653
Coordinate Information	
Geodetic	Grid
WGS 84	UTM Zone 43
Lat: 4°15'49.10627"N	E: 276882.024
Long: 72°59'23.20263"E	N: 471560.205
Ellp Height: -94.612	Orth Height: 1.104
Island Name: LD0257 Alifu Alifu Rasdhoo	Date: 30-Apr-24

Monument description & method of survey:

- SS Mushroom bolt driven to the Quay wall corner , center marked with a punch.
- PSM plate label attached with screws to the quay wall showing PSM number
- finished to quay wall level .
- Static Survey 3D control by GNSS post processing.
- Vertical datum MSL,height corrected to water level using tide prediction data.
- PSM0653 is inter-visible to PSM0654.

General site condition & access:

- located at west side of the harbour on the quay wall corner.
- easily accessible.

Owner: Alifu Alifu Rasdhoo council



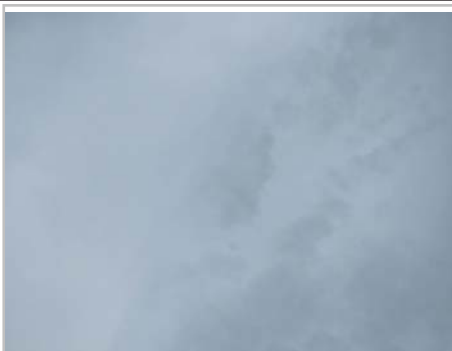
DOWN TOWARD PSM H: 1.5m



NORTH VIEW D: 3m



EAST VIEW D: 3m



FROM PSM UPTOWARD SKY H:1.8m



SOUTH VIEW D: 3m

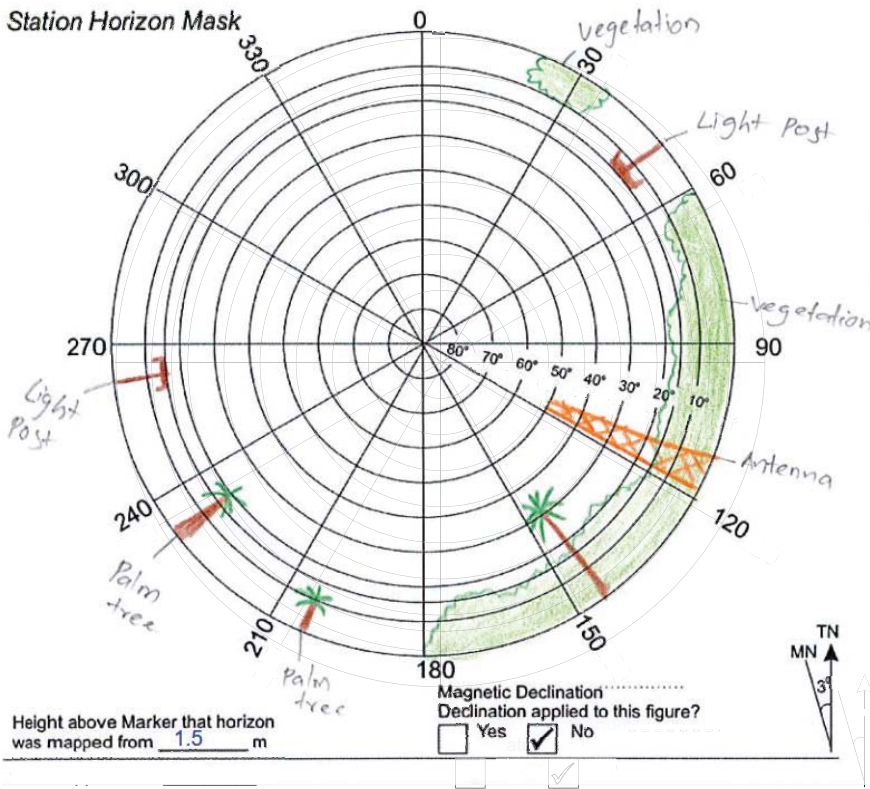


WEST VIEW D: 3m

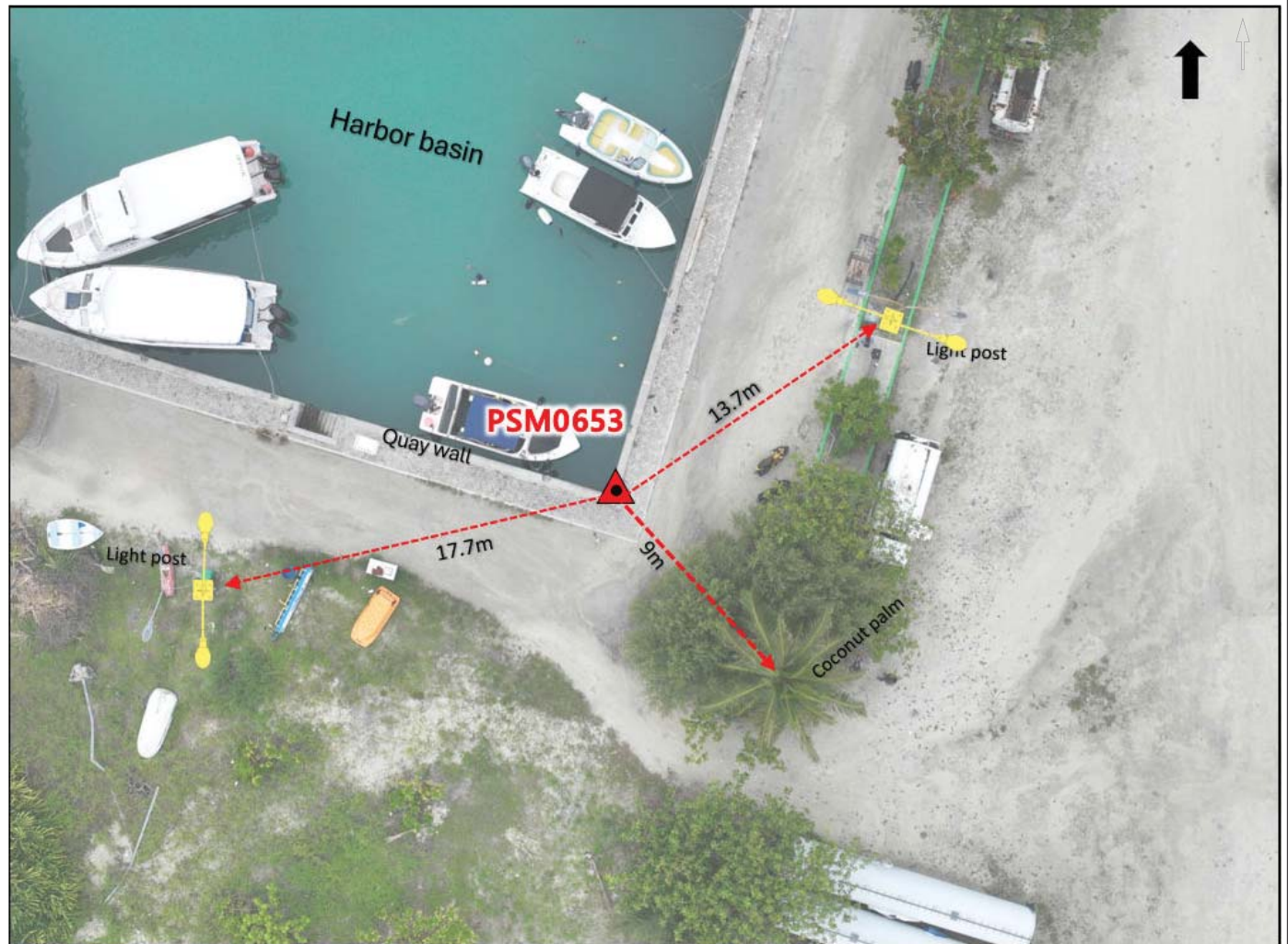
SITE INFORMATION

Station Number

P	S	M	0	6	5	3
---	---	---	---	---	---	---



Locality



Sketched by: saeed

Scale: Not to scale

Date: 30-Apr-24

MALDIVES LAND AND SURVEY AUTHORITY

MINISTRY OF HOUSING AND INFRASTRUCTURE

Office (PABX): +(960) 3004300, Fax: +(960) 3004254

Ameenee Magu, Maafannu, Male', 20392, Maldives.

Email: survey@housing.gov.mv

Web: www. surveyofmaldives.gov.mv



CONTROL POINT DETAILS	Station Number PSM0654
Coordinate Information	
Geodetic	Grid
WGS 84	UTM Zone 43
Lat: 4°16'00.00162"N	E: 277075.739
Long: 72°59'29.45486"E	N: 471894.443
Ellp Height: -94.342	Orth Height: 1.381
Island Name: LD0257 Alifu Alifu Rasdhoo	Date: 30-Apr-24

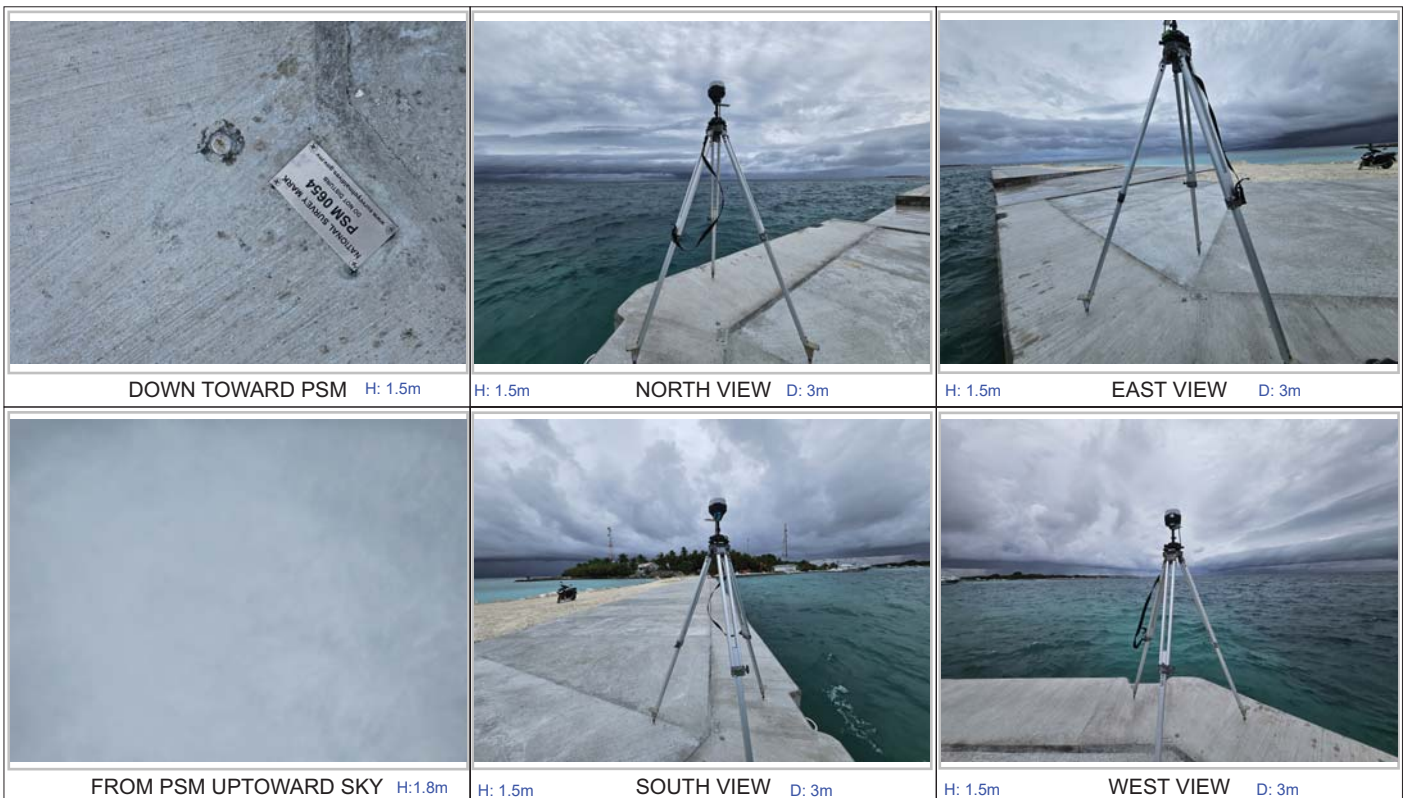
Monument description & method of survey:

- SS Hex bolt driven to the Quay wall , center marked with a punch.
- PSM plate label attached with screws to the quay wall showing PSM number
- finished to quay wall level .
- Static Survey 3D control by GNSS post processing.
- Vertical elevation related MSL was transferred from PSM0653 by GNSS static post processing.
- PSM0653 is inter-visible to PSM0654.

General site condition & access:

- located near ramp at east side of the quay wall.
- Easily accessible.

Owner: Alifu Alifu Rasdhoo council

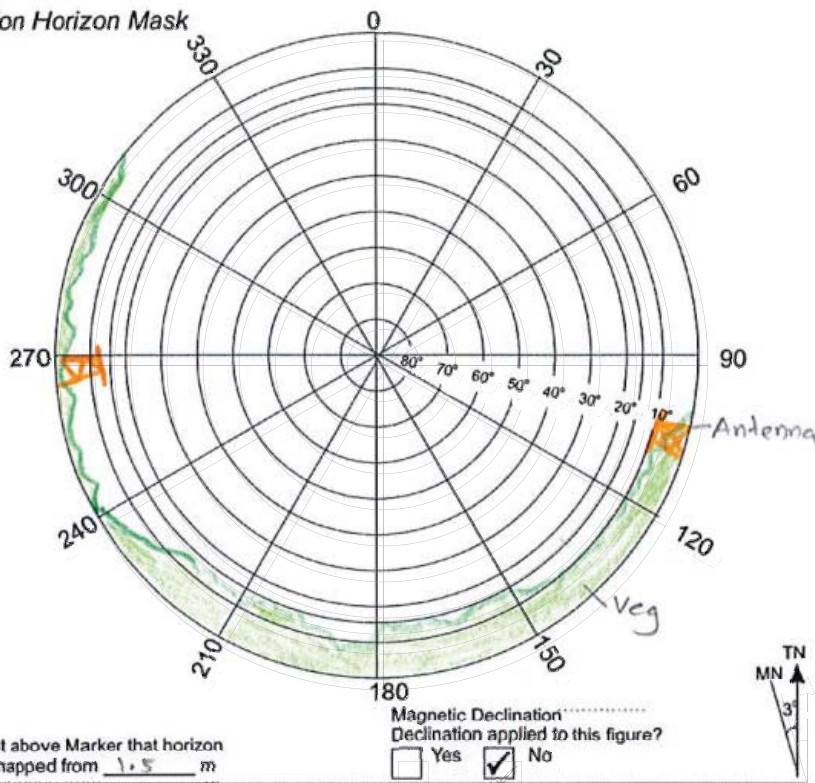


SITE INFORMATION

Station Number

P S M 0 6 5 4

Station Horizon Mask



Height above Marker that horizon was mapped from 1.5 m

Locality



Sketched by: saeed

Scale: Not to scale

Date: 30-Apr-24

MALDIVES LAND AND SURVEY AUTHORITY

MINISTRY OF HOUSING AND INFRASTRUCTURE

Office (PABX): +(960) 3004300, Fax: +(960) 3004254

Ameenee Magu, Maafannu, Male', 20392, Maldives.

Email: survey@housing.gov.mv

Web: www. surveyofmaldives.gov.mv



CONTROL POINT DETAILS	Station Number PSM0655
Coordinate Information	
Geodetic	Grid
WGS 84	UTM Zone 43
Lat: 4°15'43.04288"N	E: 277049.249
Long: 72°59'28.64007"E	N: 471373.480
Ellp Height: -94.186	Orth Height: 1.535
Island Name: LD0257 Alifu Alifu Rasdhoo	Date: 30-Apr-24

Monument description & method of survey:

- Concrete cast in-situ (cast on-site) with a diameter of 0.3m and 1.2m in length.
- A 1m long PVC pipe with a diameter of 0.3m was used as a casing for the concrete.
- A 1.5m long stainless steel (s/s) rod was driven to the ground and used to reinforce the monument.
- SS rod marked with cross as a center point of PSM.
- The monument was labeled with a plate stating the point identification.
- The monument was finished 0.2m above ground level.

- GNSS static survey was conducted for post-processing to determine the 3D coordinates of the monument.
- The vertical elevation related MSL was transferred from PSM0653 by GNSS static post processing.

General site condition & access:

- located inside graveyard boundary.
- Easily accessible.

Owner: Alifu Alifu Rasdhoo council



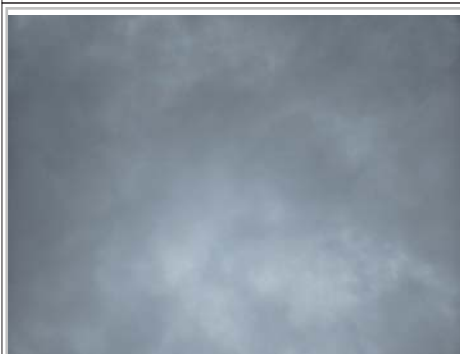
DOWN TOWARD PSM H: 1.5m



NORTH VIEW D: 3m



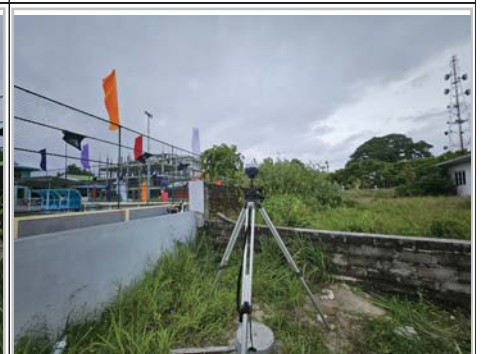
EAST VIEW D: 3m



FROM PSM UPTOWARD SKY H: 1.8m



SOUTH VIEW D: 3m

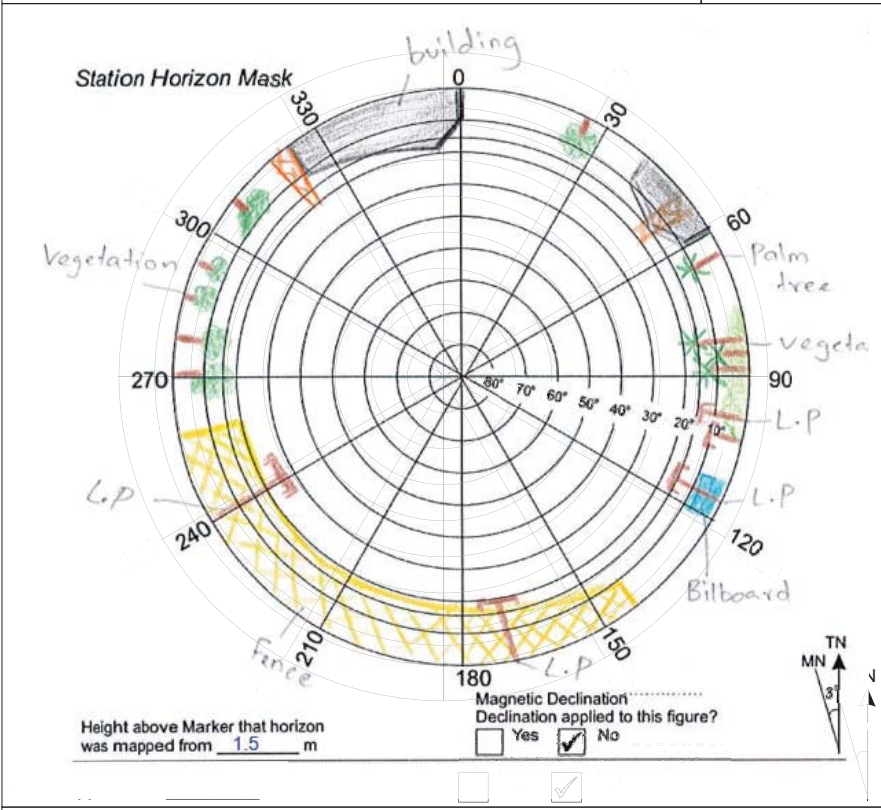


WEST VIEW D: 3m

SITE INFORMATION

Station Number

P	S	M	0	6	5	5
---	---	---	---	---	---	---



Locality



Sketched by: saeed

Scale: Not to scale

Date: 30-Apr-24